

notes :

1. If this drawing has been received electronically it is the recipients responsibility to print the document to the correct scale.
2. All dimensions are in millimetres unless stated otherwise. It is recommended that information is not scaled off this drawing.
3. This drawing should be read in conjunction with all other relevant drawings and specifications.
4. Internal dimensions to be confirmed at a later stage.

Key:

- A. Horizontally laid Sinusoidal profile insulated built-up cladding with Colorcoat HPS200® Ultra coating - Colour 'Terracotta' (matt finish) / RAL 040 40 40
- B. Horizontally laid microrib profile insulated cladding panel with Colorcoat HPS200® Ultra coating - Colour 'Albatross' / RAL 240 80 05
- C. Horizontally laid microrib profile insulated cladding panel with Colorcoat HPS200® Ultra coating, 1000mm deep bands - Colours random mixture 'Terracotta' (matt finish) RAL 040 40 40/ Merlin Grey RAL 180 40 05/ Anthracite (matt finish) RAL 7016/ Hamlet RAL 9002
- D. Vertically laid Trapezoidal profile insulated cladding panel with Colorcoat HPS200® Ultra coating - Colour 'Anthracite' (matt finish) / RAL 7016
- E. Stack - Colour 'Light Grey' / RAL 7035
- F. Horizontally laid microrib profile cladding sheet with Colorcoat HPS200® Ultra coating, 1000mm deep bands - Colours random mixture 'Terracotta' (matt finish) RAL 040 40 40/ Merlin Grey RAL 180 40 05/ Anthracite (matt finish) RAL 7016/ Hamlet RAL 9002
- G. Horizontally laid microrib profile insulated cladding panel with Colorcoat HPS200® Ultra coating - Colour 'Terracotta' (matt finish) / RAL 180 40 05
- H. Aluminium Louvers to be PPC colour Merlin Grey RAL 180 40 05 / Anthracite (matt finish) RAL 7016

Polyester powder coated aluminium window frames - Colour 'Anthracite' (matt finish) / RAL 7016  
 Metal external handrails and plant support - Galvanised finish.  
 Paladin fencing and gates - Colour 'Anthracite' (matt finish) / RAL 7016

Drawing for **PLANNING** purposes only

Content of drawing based on UMC drawing number 502520020154\_UMG0301 and CNIM drawing AAK-04-0202\_64G0008. Reproduced with permission

L	CEMS Platform & Stair Added	BC	TH	28.08.18
K	Elevation updated	PBR	TFH	20.06.18
J	Key Plan updated.	JT	CMG028.02.17	
H	Client logos updated. Steam export rack updated as per CNIM drawing. Walkway enclosure added. Key updated.	JT	CMG013.02.17	
G	Dimensions added	MT	CD	20.01.17
F	Elevation and Site Plan updated.	JH	CMG010.01.17	
E	Elevations Updated to suit latest UI design. Keyplan updated to show revised site plan. Cladding design clarified.	AJL	RS	05.07.13
D	Elevation amended to suit comments.	JAT	SG	15.10.12
C	Elevations updated.	JAT	SG	09.10.12
B	E.ON logo added. Building extents confirmed.	KRy	PRP	15.02.10
A	UMA building extents confirmed. Keyplan updated. Stack colour confirmed	AJL	PRP	18.01.10

rev	amendments	by	ckd	date
-----	------------	----	-----	------



Sherwood House  
 Sherwood Avenue  
 Newark, Nottinghamshire  
 NG24 1GQ  
 T +44 (0) 1636 605 700  
 F +44 (0) 1636 610 696  
 W www.rpsgroup.com  
 E rpsnewark@rpsgroup.com



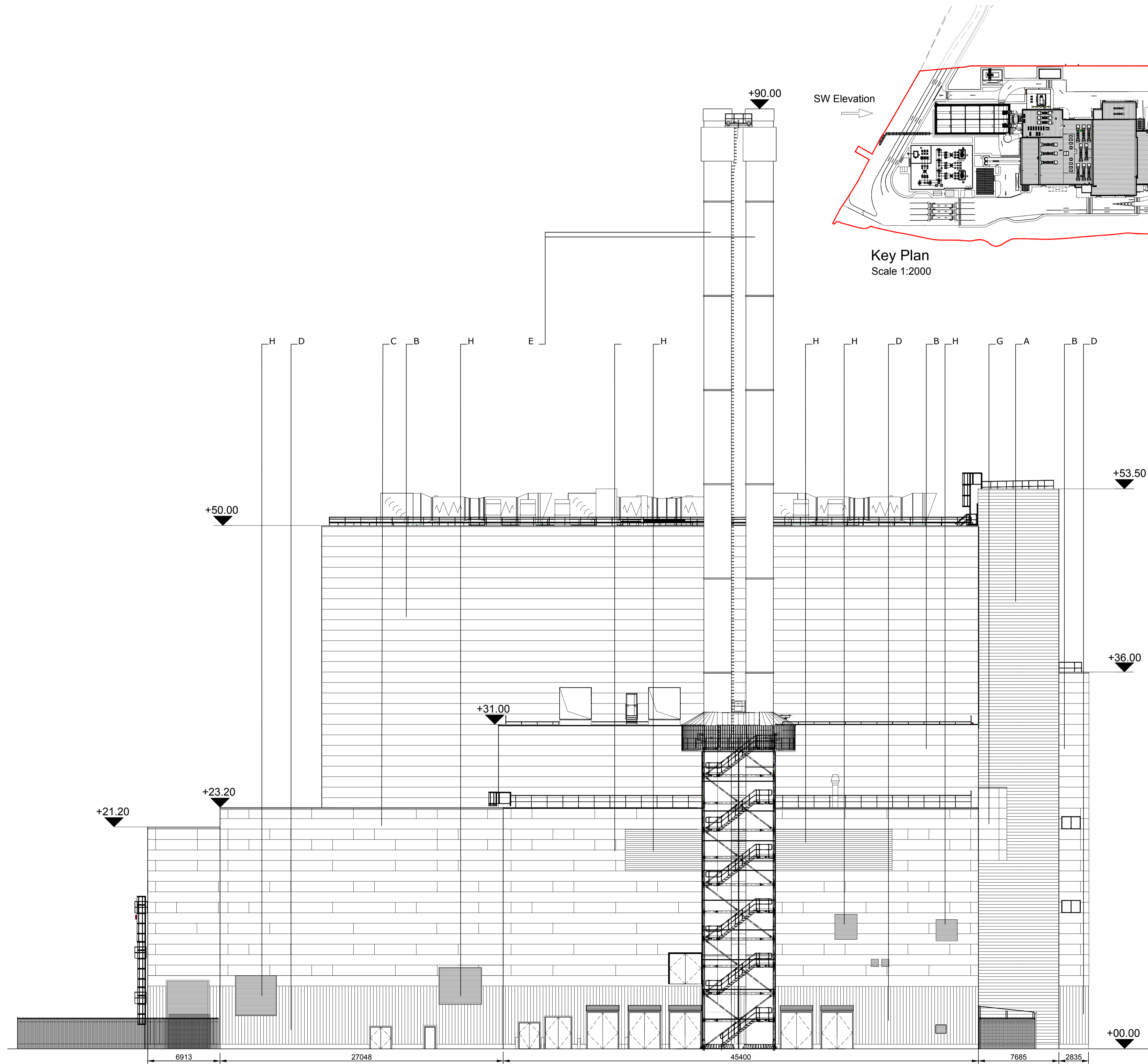
Project **Kemsley Sustainable Energy Plant**

Title **Main Building Proposed South West Elevation**

Drawing Status	Date Created	Drawing Scale
Preliminary	23.11.09	1:200
Project Leader	Drawn By	Initial Review
AWY	PRP	RS

Drawing Number **16315/A1/P/0127 L** Rev

**FIGURE 4.10D**



SW Elevation

Key Plan  
 Scale 1:2000

South West Elevation  
 Scale 1:200

